

Tohoku University uses the Safety Confirmation System to ascertain the safety of students and staff during emergencies. In the event of a natural disaster, all students/staff are asked to please respond to the safety confirmation e-mail message.

► **If you do not respond, the university will be unable to provide your family with any information if they contact us.**

It will also delay the identification of people who really are missing and in need of search/rescue.

► **Following the Fukushima-ken Oki earthquake that occurred on February 13, 2021, it was thanks to your cooperation that we were able to confirm within a short time that everyone was safe, which helped us to quickly get back to normal.**



Point 1

! Recommend ! It is possible to confirm your safety using a dedicated app.

Download and install the free Emergency Call app from the Apple App or Google Play Store. When configuring the connection settings, enter your Tohoku University ID and password to receive notifications from the app.

(If you change your Integrated Electronic Authentication System password, please change the password in the app as well.)

緊急連絡/安全確認システム
エマージェンシーコール

サーバアクセス用のURL、ユーザID、パスワードを入力してください。

URL(1) https:// ホスト名/企業コード

URL(2) https:// ホスト名/企業コード

ユーザID ユーザID

パスワード パスワード

ユーザIDとパスワードを保存

次回以降、ユーザIDとパスワードの入力を省略する場合はオンにしてください。
(この設定はログイン後に反映されます)

登録/ログイン

1. On the initial configuration screen, enter the below links, shown in blue, for URL (1) and URL (2).

URL (1): <https://asp34.emc-call3rd.jp/tohoku-univ/>

URL (2): <https://asp34.emc-call4th.jp/tohoku-univ/>

2. Enter your Tohoku University ID and password, then tap the "Register" button.

※We recommend turning on "Save user ID and password."

3. The notification history screen will be displayed. This concludes initial setup.

Point 2

A safety confirmation message will be sent to the e-mail addresses you registered in the Student Affairs Information System (students), or Integrated Electronic Authentication System (staff). We ask that **you register a mobile address that you use regularly** so that we can contact you promptly in the event of an emergency.

University-wide safety confirmation training will be held during the 2021 academic year on April 23 and October 25. All students/staff are asked to please respond to the safety confirmation message.

*The drills will be held even in the event of real small/moderate earthquakes (the test message will be sent as long as any actual earthquakes are less than 5-upper on the JMA seismic intensity scale).

Contact Information:

Disaster Management Promotion Office (General Affairs Department, General Affairs Section)

Mail: gen-som2@grp.tohoku.ac.jp Web: <http://www.bureau.tohoku.ac.jp/somu/saigaitaisaku/>

E-mail Safety Confirmation Settings

Students

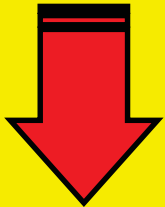
Safety confirmation messages will be sent to the addresses you set in "E-mail address 1" and "Forwarding address."

The top screenshot shows the 'Student Services' menu with 'New Application' highlighted. The middle screenshot shows the 'Registering a New Application' form with 'Change Student Information' highlighted. The right screenshot shows the 'Student Information' page with 'E-mail address 1' highlighted. A flowchart on the right indicates the path: Student Services tab → New Application menu → Change Student Information.

Staff

Safety confirmation messages will be sent to the address you set in "E-mail address(TU Mail)" and "Optional E-mail address" and "E-mail address(private)."

The top screenshot shows the 'For Staff' login page with 'Login with your Tohoku University ID' highlighted. The middle screenshot shows the 'Integrated Electronic Authentication System' profile page with 'TU Mail' highlighted. A callout box states: 'The university will send safety confirmation messages to the address you enter here.' A flowchart on the right indicates the path: For Staff tab → Login with your Tohoku University ID → Integrated Electronic Authentication System → Edit Profile → SAVE.



If you receive a safety confirmation notification by e-mail, open the URL shown in the message. Simply select your responses on the online form to report your safety status.

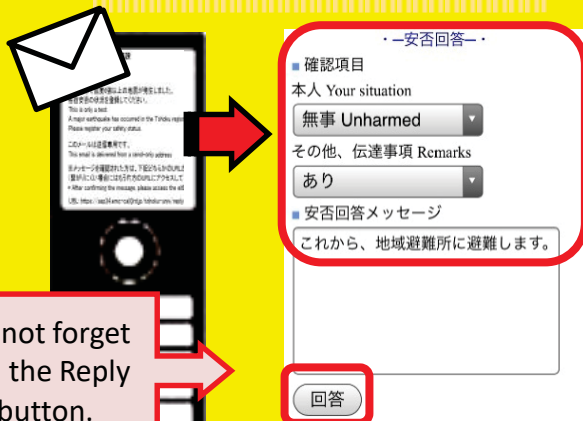
Safety confirmation messages will always be sent from tohoku-univ@anpi.tohoku.ac.jp.

Please set up your e-mail filters to accept messages from this domain.

Responding with the dedicated mobile app (Emergency Call)



Response screen accessed from e-mail



Please do not forget to click on the Reply (回答) button.

See the website below for details on e-mail address registration and information about the system!

*Or use the QR code instead of the URL.

<http://www.bureau.tohoku.ac.jp/somu/saigaitaisaku/index3.html>

